



MONTHLY MEMBERSHIP PROGRESS REPORT

District 5M 3

Results as of: 06/30/2018

GMT: MICHAEL MOLENDIA

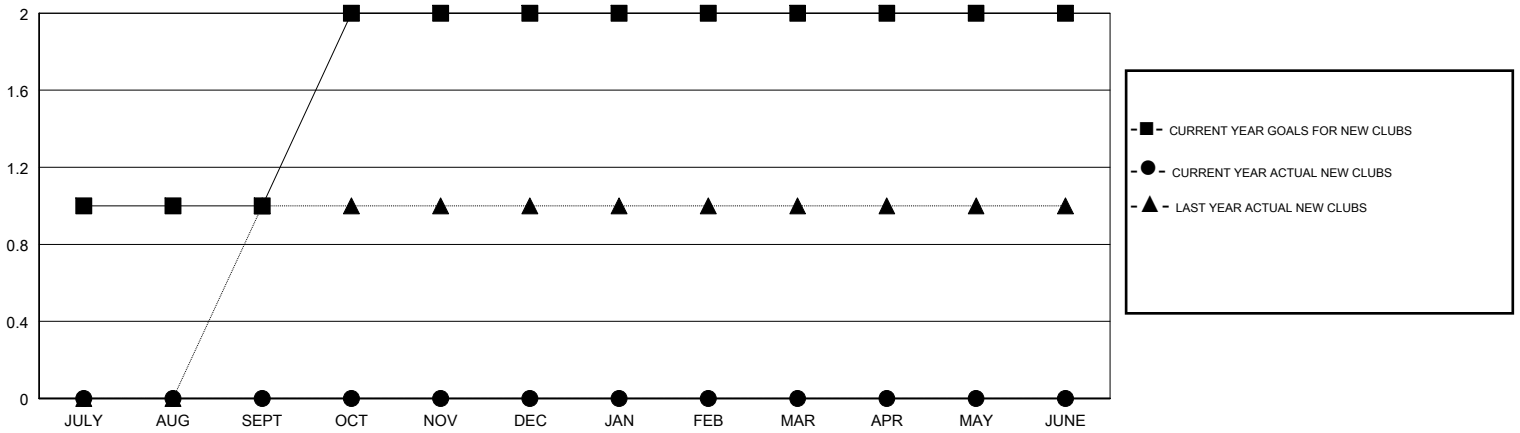
LOCATION MINNESOTA

GMT CA

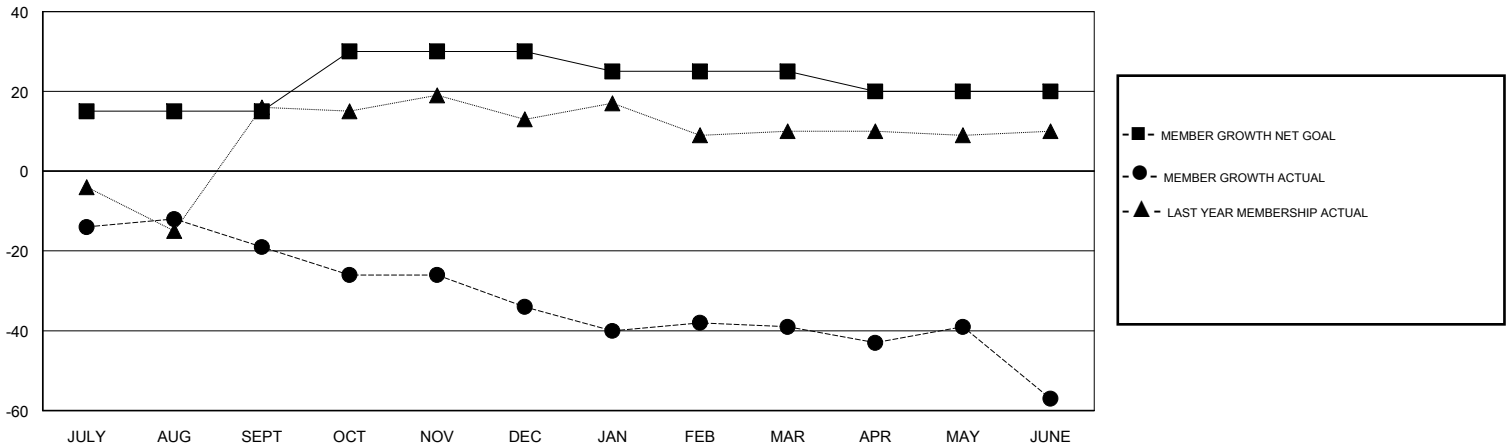
Clubs			
RESULTS FOR 2017-2018			
QUARTER	NEW CLUB GOAL	NEW CLUBS	DROPPED CLUBS
JULY/AUG/SEPT	1	0	0
OCT/NOV/DEC	1	0	0
JAN/FEB/MAR	0	0	0
APR/MAY/JUNE	0	0	0

Members			
RESULTS FOR 2017-2018			
QUARTER	MEMBER GROWTH NET GOAL	MEMBER GROWTH ACTUAL	DROPPED MEMBERS ACTUAL (including transfers)
JULY/AUG/SEPT	15	20	39
OCT/NOV/DEC	15	18	33
JAN/FEB/MAR	-5	24	26
APR/MAY/JUNE	-5	47	59

GOALS AND ACTUAL NEW CLUBS CUMULATIVE



GOALS AND ACTUAL MEMBERS CUMULATIVE



DROPPED CLUBS: 0	26 CLUBS OF 42 ADDED 1 OR MORE NEW MEMBERS	<u>GENDER DISTRIBUTION</u>	
		MALE	944 (77.57%)
		FEMALE	273 (22.43%)
		Women Percentage Fiscal Year Goal: 25%	
<u>DROPPED MEMBERS</u>		TOTAL FAMILY UNIT MEMBERS	0
DECEASED	17	FAMILY MEMBERS PAYING HALF DUES	0
CLUB CANCELLED	0		
OTHER	140		
TOTAL	157		

[CLICK HERE FOR CUMULATIVE MEMBERSHIP DATA](#)